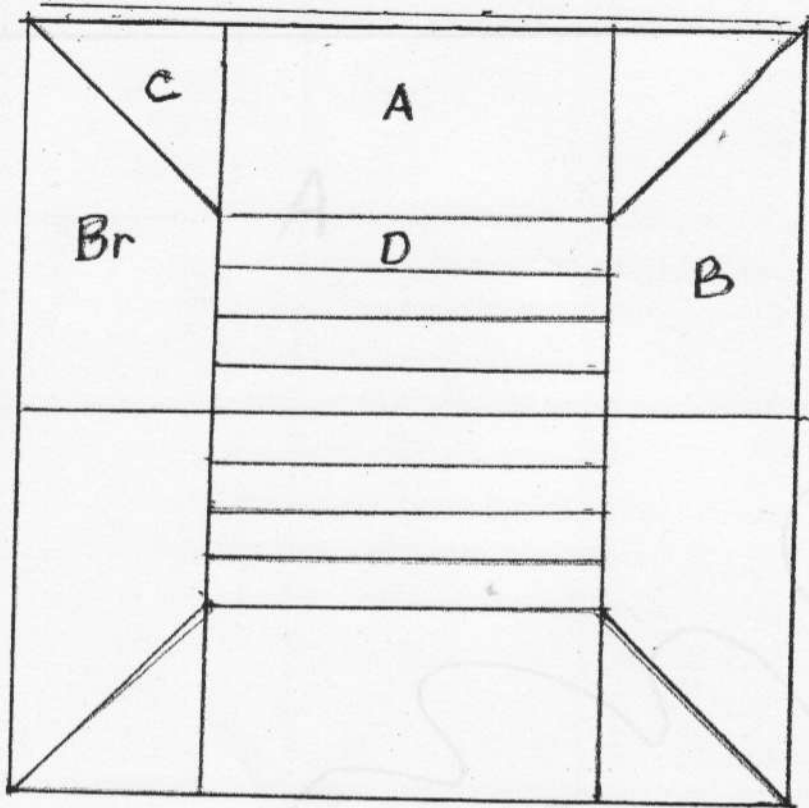



From: Quilter's Block a day Calendar


# Spool-


8" Finished



A:  $2\frac{1}{2}'' \times 4\frac{1}{2}''$    
Cut 2 Light Brown

B: see Below - BACKGROUND OF CHOICE -

C:  $2\frac{1}{8}''$  CUT 2 - LIGHT BROWN  
then cut ONCE ON the diagonal 

D:  $1'' \times 4\frac{1}{2}''$  

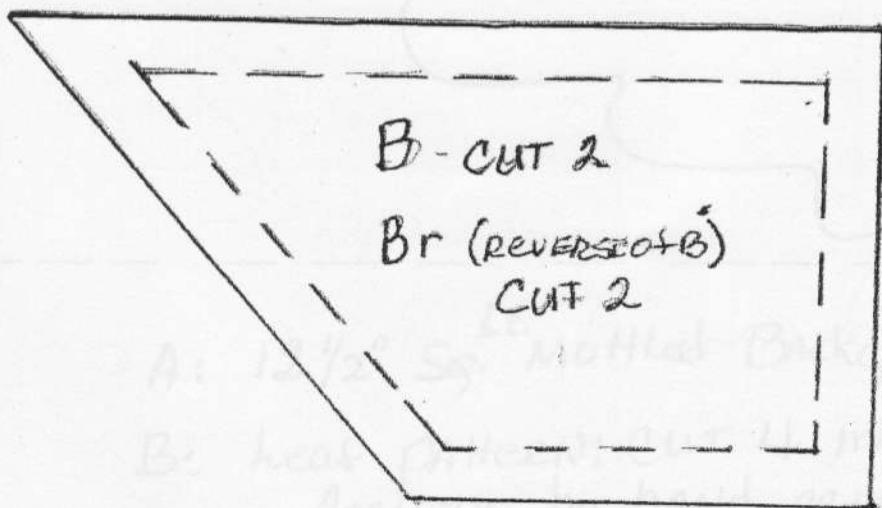
CUT 8, EACH OF A different COLOR OR USE a tight STRIPE, cut  $2\frac{1}{2}'' \times 4\frac{1}{2}''$ , CUT 2 TO USE INSTEAD OF 8  $1''$  by  $4\frac{1}{2}''$  STRIPS.

PIECE ~~4~~ D's, ADD A, PRESS ALL SEAMS IN ONE DIRECTION.

PIECE C's TO B + BR THEN add to A-D.

Repeat with remaining pieces Sew together to complete block.

Sign your NAME IN SEAM ALLOWANCE



Sign your name on back of block