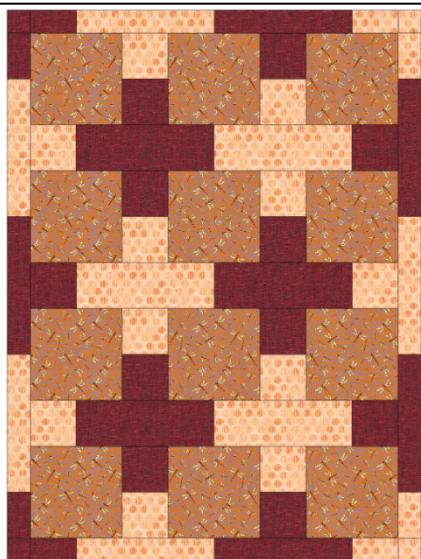


PLUS SIGN QUILT with options for different sizes of feature squares

PURPOSE: Our Charity quilts group often receives big print juvenile fabric that we know kids will love.

This pattern comes with size variations to make quilts for children using various sized squares of the feature fabric in an easy to sew design. The feature square is the largest square in the picture and we use a novelty print there. There are instructions using 9 inch finished feature squares, 8 inch finished feature squares, and both square and rectangular 6.5 inch finished feature squares.



9 inch finished feature squares Size 40.5 x 54

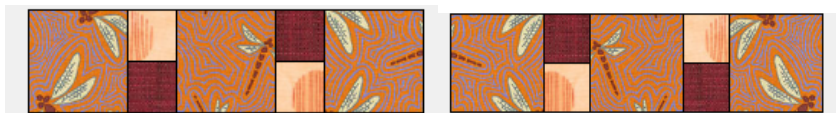
CUT (WOF = Width of Fabric and is assumed to be 40" wide)

- 12 9.5 inch squares all the same or mixed (finishes 9") (4 from 9.5 WOF strip)
- 11 5 inch squares in each of two colors (finishes 4.5") 22 total (8 from 5" WOF strip)
- 3 14 x 5 inch rectangles in each color (finishes 13.5x 4.5) 6 total (two from 5 inch WOF strip – you can cut three if you have 42 inches)

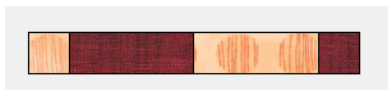
Cut Borders (outer rectangle of narrower pieces)

- 5 14 x 2 3/4 rectangles in each color (finishes 13.5 x 2 1/4) 10 total (two from 2 3/4 inch WOF strip – you can cut three if you have 42 inches)
- 4 2 3/4 by 5 in each of two colors (finishes 2 1/4 by 4.5) 8 total
- 2 2 3/4 squares in each of two colors (finishes 2 1/4) 4 total

SEW 2 strips that look like each of these below: (four strips total)- position of small squares is different and can't be rotated.



SEW 3 strips that look like this – (directional fabrics can't be rotated after sewing strips but otherwise you can rotate one to make the pattern.)



Join together the 7 strips, checking carefully to get the colors arranged in plus shapes.

Borders

Sew two long sides like this-- they aren't identical due to colors



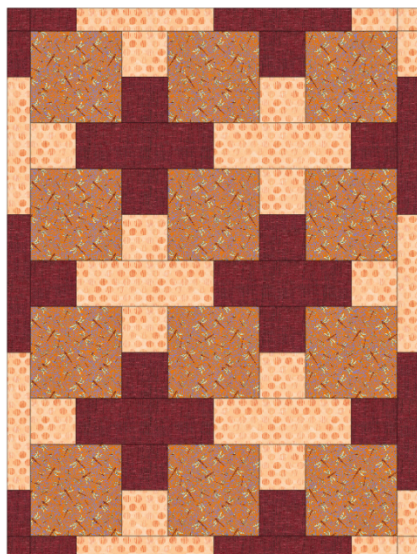
Sew to sides of quilt (check that you are completing the pattern to make the plus design).

Sew Two short sides like this - these are identical in this quilt size.



Sew the 2 3/4 "squares to the end that is the **same** color. Orange to orange and red to red. Double check to get your design right and sew to top and bottom.

PLUS SIGN QUILT with options for different sizes of feature squares



ALTERNATE SIZE: Exactly the same quilt made with **8 inch finished feature squares.**

8 inch finished feature squares

Quilt finishes 36 x 48. We like to make quilts that are around 40" wide so that we can use one length of fabric to back it. We also try to make them 36" or greater.

Cut

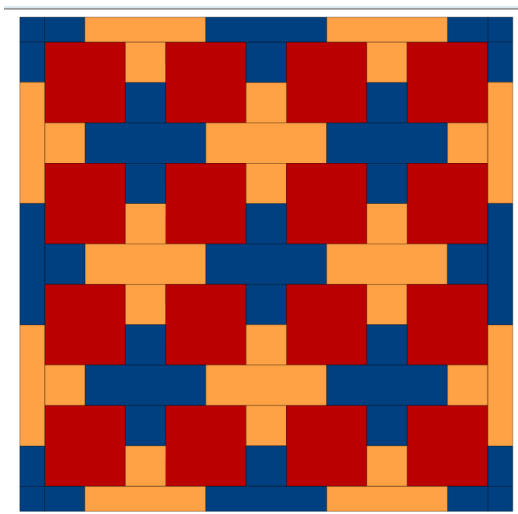
- 12 8.5 inch squares
- 11 4.5 inch squares in each of two colors (22 total) (8 can be cut from 40 inch WOF strip that is 4.5 inches wide)
- 3 12.5 x 4.5 inch rectangles in each of two colors (3 can be cut from 40 inch WOF strip that is 4.5 inches wide)

Cut Borders (outer rectangle of narrower pieces)

- 5 12.5 x 2.5 inch rectangles from each color (3 can be cut from 40 inch WOF strip that is 2.5 inches wide)
- 4 2.5 x 4.5 inch rectangles from each color
- 2 2.5 inch squares from each color

Sew according to directions above for 9 inch finished feature squares.

PLUS SIGN QUILT with options for different sizes of feature squares



SQUARE QUILT 6.5 inch finished feature squares: Finished size will be 39.75 x 39.75

Yardage required will be about 5/8 yard for the feature fabric used in the big squares and 5/8 each of a light and a dark background fabric for the plus signs.

CUT (WOF = Width of Fabric and is assumed to be 40" wide)

Center Body of quilt: CUT: 16 7 inch squares all the same or mixed (Feature fabric- often a novelty print) (finishes 6.5") (5 from 7" WOF strip, 6 if you have 42")

16 3.75 inch squares in light color and 14 dark color (finishes 3.25") 30 total (10 from 3.75" WOF strip)

4 light and 5 dark 10.25 x 3.75 inch rectangles (finishes 9.75x 3.25) 9 total (three from 3.75 inch WOF strip – you can cut four if you have 42 inches)

Cut Borders- outer rectangle border of narrower pieces

8 light and 4 dark 10.25 x 2.5" rectangles (finishes 9.75 x 2 12 total (three from 2 inch WOF strip – you can cut four if you have 42 inches)

8 dark 2.5 by 3.75" (finishes 2 by 3.25) 8 total

4 dark 2.5" squares (finishes 2") 4 total

SEW 2 strips that look like each of these: (four strips total) using the 7 inch feature squares and the 3.75 inch light and dark squares- ---these are the same when rotated if the fabric isn't directional.



SEW 2 strips that look like this, using 3.75 inch wide pieces–



One that looks like this



Join together the 7 strips, checking to get the colors arranged in plus shapes.

Borders Sew four borders like this from the narrower 2.5 inch pieces



Sew one border to each of the two sides of quilt (check that you are completing the pattern to make the plus design.)

Sew the 4 2.5" squares to each end of the other two borders.. Double check the design and sew to top and bottom.

